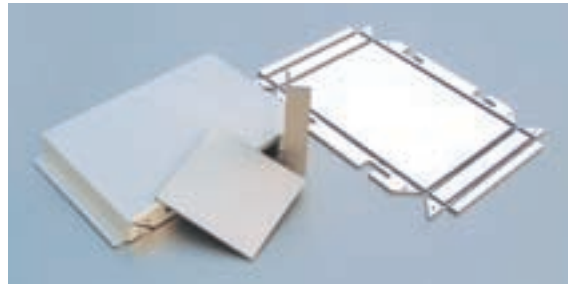
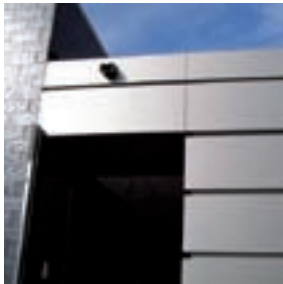


Numerous application possibilities with NedZink NOVA COMPOSITE

NedZink NOVA COMPOSITE



Product description

NedZink's NOVA COMPOSITE gives the qualities of zinc an extra dimension. Its many talents lend themselves to new ideas in facades, roofs and interiors. With a layer of polyethylene between two layers of zinc, NOVA COMPOSITE can be easily processed with standard tools, routed into cassettes or simply screwed or riveted into position. Self-colored, rigid and extremely stable – enabling untold applications of zinc.

NOVA COMPOSITE opens the way to new ideas. New forms, new structures, a new drive. The very special character of zinc captures the properties of a new and practical building material.

When you use NOVA COMPOSITE you are going for a maintenance-free material that stands up to the elements superbly.

The strength and stability of the panels are a major advantage. This, combined with the elegant appearance of the pre-patinated zinc, produce a product of exceptional quality and appearance.

NedZink NOVA COMPOSITE can be applied to large facade coverings without any wave formation.

Even panels of 1,000 x 6,000 mm can be included. Rounded elements and forms are easily realized. Given the appearance and versatility of the product the opportunities for creative design are endless.

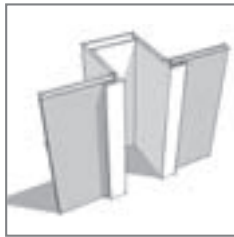
NedZink NOVA COMPOSITE product properties

| | |
|------------------------------|--|
| Standard dimensions | 3,200 x 1,000 mm |
| Standard panel strength | 4 mm |
| Panel composition | on top and at the bottom : 2 x 0.5 mm NedZink NOVA Core : 3 mm Polyethylene LD-PE |
| Tolerances | Thickness : -0 / +0.4 mm Width : + / -2.0 mm Length : -0 / +4.0 mm Diagonal : max. 3.0 mm |
| Weight standard panel (4 mm) | 9.96 kg / m ² |

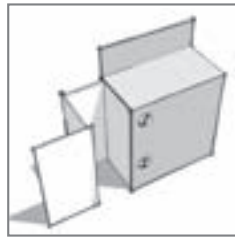
Thanks to this new development, NedZink has clearly expanded the possibilities of titanium zinc facade covering and offers architects, developers and craftsmen a product that is suitable for a wide range of different possibilities.



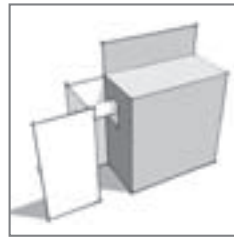
Adhering



Clamping



Mechanical screw fixed



Hook-on system

The following attachment methods are possible with this NOVA Composite:

- Adhering
- Clamping
- Mechanical screw fixed
- Hook-on system

For additional information about the product range and the processing of NedZink products see our website www.nedzink.com.



Technical characteristics

| | |
|-----------------------|---|
| Alloy | Titanium zinc in accordance with DIN EN 988 |
| Tensile strength (Rm) | min. 150 N/mm ² |
| Yield limit 0,2% | min. 110 N/mm ² |
| Elasticity module | ≥ 80,000 N/mm ² |
| Temperature range °C | - 50 to + 80 |
| Expansion coefficient | 0.022 mm/m*K |
| Core | Polyethylene (LD-PE) |
| - Density | 0.92 g/cm ³ |
| External surfaces | Titanium zinc |
| - Density | 7.2 g/cm ³ |



NedZink

Netherlands

NedZink B.V.
 Postbus 2135, NL-6020 AC Budel
 Hoofdstraat 1, NL-6024 AA Budel-Dorplein
 Tel: +31 (0)495-455700
 Fax: +31 (0)495-455790
 Internet: www.nedzink.com
 E-mail: info@nedzink.com

Germany

NedZink GmbH
 Im Lipperfeld 21,
 D-46047 Oberhausen
 Tel: +49 (0) 208-85798-0
 Fax: +49 (0) 208-8579830
 Internet: www.nedzink.de
 E-mail: info@nedzink.de

Belgium

NedZink S.A.
 Avenue Jean Lenoir 14,
 B-1348 Ottignies (Louvain-la-Neuve)
 Tel. +32 (0)10-452727
 Fax. +32 (0)10-453362
 Internet: www.nedzink.be
 E-Mail: info@nedzink.be

Registered trademarks

NedZink NATUREL, NOVA, NOVA STRUCTURE, NTZ are registered trademarks of NedZink B.V.

Liability

This datasheet was produced with the utmost care. All information specified in this datasheet is according to our current knowledge, and gives information about our products and their uses. It is not, however, intended as a

guarantee for certain properties of the products or their suitability for an actual application. One can therefore derive no rights from the content of this datasheet.

Copyright

© The written permission of NedZink B.V. must be given beforehand for any use of this datasheet such as copying, saving in an automatic file or publication in any form whatsoever.



Koramic
 INVESTMENT GROUP